

CERTIFICATE OF LOCATION OF GOVERNMENT CORNER

NORTH QUARTER Corner of Section 20, Township 107N, Range 39W

5th Principal Meridian, State of Minnesota, County of MURRAY

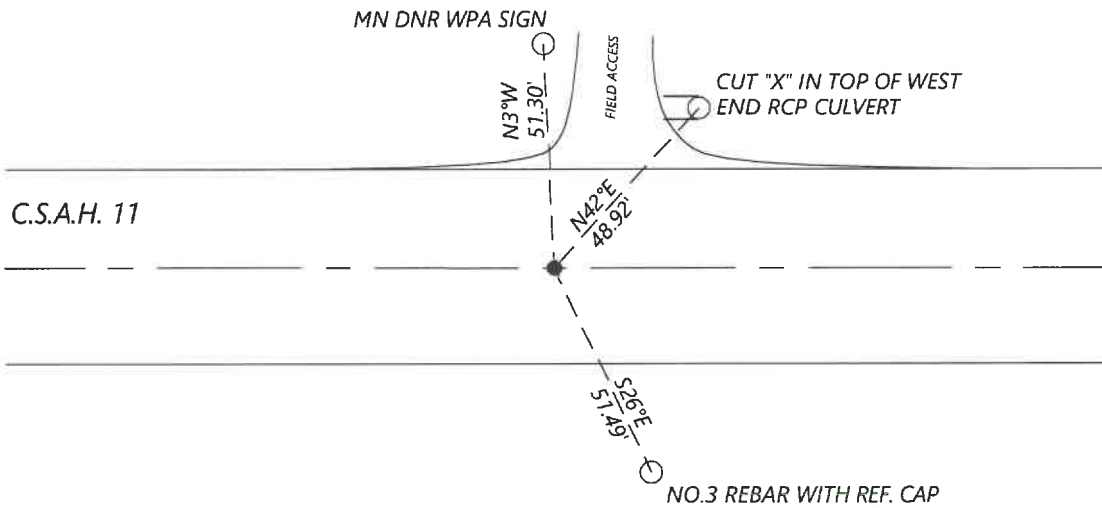
At the corner location shown on the sketch:

On 8/27/2020 found a 3/4" OPEN PIPE WITHOUT CAP, 0.6' BELOW GRADE
DATE

left monument as found lowered monument removed monument (explain)

On _____ placed a _____
DATE

SKETCH OF REFERENCE TIES



N.T.S.

Statement of evidence for this corner location is on back of this page.

I hereby certify that this document was researched and prepared by me or under my direct supervision and that I am a licensed Land Surveyor under the laws of the State of Minnesota.

Signature [Handwritten Signature]

Date 6/16/2021 License No. 45874

Title:

- Land Surveyor Professional Engineer
- County Surveyor County Engineer

OFFICE OF THE COUNTY RECORDER

County of Murray

I hereby certify that this document was filed in the Co.

Recorder's office at _____ M. on the _____ day of _____ A.D. 20

County Recorder [Handwritten Signature: Karen Brown]

by JUN 22 2021, Deputy

DOCUMENT NO. _____

Statement of Evidence:

North Quarter Corner of Section 20, Township 107 North, Range 39 West, 5th Principal Meridian, Murray County, Minnesota.

- July 1861 *GLO Notes: Set post in mound*
- May 1901 *Survey record for Section 17 shows a limestone 6x10x20" stone at the corner.*
- 1963 *Highway Department records show that an iron pin was placed at the corner.*
- Nov. 1987 *Highway Department records show that a $\frac{3}{4}$ " iron pin was placed at the corner.*
- Oct. 2000 *A survey in Section 20 by Perry Zieske shows an iron monument was found at the corner. He shows a distance of 5283.27ft to the South Quarter corner.*
- June 2012 *Highway Department records show a $\frac{3}{4}$ " steel pipe was located at the corner. The following coordinates are listed: N: 179338.27 E: 556208.11*
- Oct. 2015 *A survey in Section 17 by Dennis Esplan shows an iron monument was found at the corner. He shows a distance of 2646.36ft to the Southeast Section Corner.*
- Sept. 2020 *Westwood Professional Services searched and found a $\frac{3}{4}$ " iron pipe at the corner. Coordinates fit well with the 2012 Highway Dept. records. Review of the 2000 and 2015 surveys suggests the corner location may be 1-1.5ft to the west. I accepted the location of the found monument and established reference ties.*

Analysis of the recovered data, field evidence and survey measurements, indicates that the monument found is the correct perpetuation of this corner. For additional information concerning this corner please contact Westwood Professional Services.